



ESSEX

Manufacturing, Inc.



We've Got You Covered



Outfit Your RTV900™ With Essex



Essex transforms Utility Vehicles to meet your needs. Tailor yours from our line of quality accessories.



(888) 643 - 7739
www.EssexMfg.com
Saginaw, TX





Essex Modular Cab Enclosure: Kubota RTV900

The Essex Modular Cab system is designed to fit and enhance the RTV with its unique features, quality and ease of installation. The modular components provide for flexible configurations and future upgrades.



The steel **Reinforced Vinyl Doors** are molded to fit the door opening. Light but durable, they feature lift off hinges for easy removal and storage.

The **Essex Hardtop** and **Safety Glass Lift Windshield** are the foundation for the modular cab system. The Hardtop features a preinstalled wiring harness, dome light and headliner.

The addition of a rear sliding glass window and rear quarter panels add further protection while maintaining full visibility

Our trademark *Lift Windshield* and *Sliding Glass Rear window* provide excellent visibility and flow thru ventilation. Together with the *lift off doors*, they provide 4-way circulation that makes an Essex cab practical even in hot summer and southern climates.

The cab is constructed of 16 & 18 gauge rust inhibited 'Electro-galv' steel with a durable gray powder coat finish. The frame is reinforced for strength and formed for a tight, easy installation with a minimum of fasteners. It includes a preinstalled dome light, an electric wiper and an accessory harness for easy installation of electrical accessories.

Add our unique **steel reinforced vinyl doors** and your RTV has the best cab available. The lightweight, 1/2" thick, vinyl doors are constructed over the tubular steel frame. They feature lift-off hinges for easy door removal and quality recessed paddle latches with locks. They feature a larger sliding window. Door limit straps are included.



All Cabs include: Dome light, An accessory wiring harness with fuse panel; and an electric windshield wiper.



Our **Rear Glass Window** slides open 20" for four way circulation.

ACCESSORIES FOR THE KUBOTA RTV900



The Essex Steel Hardtop features a preinstalled domelight, wiring harness and insulating headliner. It can be installed standalone or as part of our modular cab system Available Camo or Gray. [PART# 900HT]

Our **Clear Plastic Windshield** snaps in place without tools. Can be installed or removed in less than a minute. Safe to trailer at normal highway speed. [PART# 900WS]



Unique **Glass Lift Windshields** also available with windshield wiper. Safe to trailer at normal highway speed. [PART#900WLT]



CAB ACCESSORIES



Stereo/CD Player

Radio with Stereo/CD/MP3 capability, includes credit card sized remote control.



Rearview Mirror

A Universal convex mirror is all metal with a chrome finish that lasts, provides a panoramic view.



Cab 2-Speed Fan

Cooling/Defrost fan, 360 Degree rotation, easily connects to the Essex Wiring harness.

CARGO ACCESSORIES



Front Work Basket

Expanded metal open top basket with powder coat textured finish. Mounts to OEM bumper.



Bed Gates

Three-Rail Aluminum side gates, great for securing cargo and using as a backrest for our Bed Seats (See below).



Bed Seats

Rugged and portable bed seats, works best with our Bed Gates, gray or camo cushions.



Hi Seat

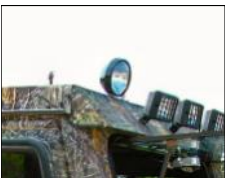
Our Hi-Seat allows you to see over the top of the vehicle, yet ride safely inside the profile of the unit. Our Dogbox or other cargo fits below.

LIGHTING ACCESSORIES



Visor Light Bar

Hardtop Visor mounted lightbar, consists of three 55W Halogen Lamps and switch panel.



Hi-Beam Spotlight

Roof-mounted 160,000 or 245,000 Candle Power spotlights, conveniently hand controlled from inside the cab.



Strobe/Beacon Light

Our bright amber beacon light, 70 flashes per minute. Mounts on top of roof.



Bed Lights

55W Halogen flood lights, includes switch assembly and harness. Mounted on rear of Hardtop.



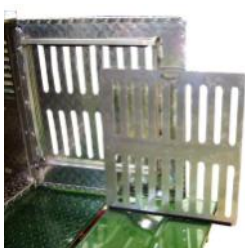
THE ESSEX "ALL-HUNT" OUTFIT



ESSEX'S MODULAR "ALL-HUNT" CONFIGURATION INCLUDES OUR LARGE 2-HOLE DOG BOX, THE ESSEX HI SEAT, AND A FOOTLOCKER. OPTIONS INCLUDE A REAR STORAGE LOCKER OR 4-GUN SLIDE, AND AN EXPANDED METAL BASKET ON THE TOP-REAR OF THE DOG BOX.

CONTACT US FOR MORE MULE AND HUNTING ACCESSORIES INCLUDING GUN SCABBARDS, WINDSHIELDS, CAB ENCLOSURES, AND OUR SURE-FOOT KEVLAR-BELTED TIRES.

ALSO AVAILABLE FOR MULE, AND CLUBCAR XRT.



THE ESSEX **2-STALL DOG BOX** FEATURES FRONT BUTTERFLY VENTS, SIDE LOUVERS, SELF STORING DOOR VENTS, 10 GALLON WATER TANK, HEAVY DUTY PENZ LATCHES, AND AN ELECTRIC FAN.



ESSEX SUREFOOT'S STAND ALONE IN THE UTILITY VEHICLE MARKET WITH PUNCTURE RESISTANCE, LOAD RATINGS OVER 1100 POUNDS, LATERAL STABILITY AND RUN-FLAT PERFORMANCE. THEY FEATURE KEVLAR-BELTING, REINFORCED SIDEWALLS, AND TOUGH "STUBBLEGUARD" RUBBER. OUR SUREFOOT'S CAN TAKE YOU WHERE YOU WANT TO GO... *AND BRING YOU BACK!*

www.essexmfg.com

P.O. Box 92864 Southlake, TX 76092

1-888-64-ESSEX